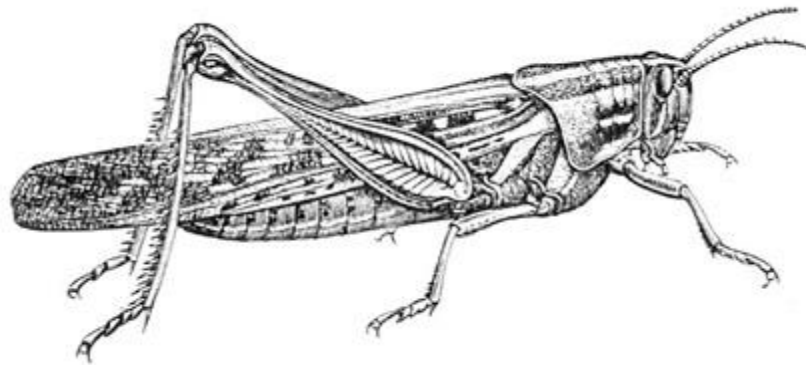


Wild Warwickshire

Saxon Mill Carr Invertebrate Survey

August 2009



M. C. Smith
8/9/2009

Saxon Mill Carr is managed for the Heber-Percy Estate by **Wild Warwickshire**



SAXON MILL CARR INVERTEBRATE SURVEY

SUMMARY

Frequent visits during the summer months have recorded a number of invertebrate species. Whilst not an exhaustive list the more easily identified species have been fully identified and recorded. Butterflies and Dragonflies are particularly prolific both in number of individuals and species. There are also interesting records of Orthoptera of which all three species currently recorded appear to be on the northern most extent of their national range and are moving northwards perhaps as a consequence of climate change.

INTRODUCTION

This short paper is designed to illustrate the variety of invertebrate life on Saxon Mill Carr. The diverse range of vegetation creates a range of micro-climate and larval food-plants upon which a great number of invertebrates are able to support themselves.

This study lists all species thus far encountered and is by no means a systematic or complete list.

METHODOLOGY

As part of a weekly study of the site all insects were identified where possible. This was aided by the use of photography. Most visits lasted approximately 20 minutes with some specialist visits running to a full hour.

All the visits were conducted during the day with most between the hours of 9 am and 12pm, this therefore limits the list of Moths present on the site to only those that are day flying.

Whilst visits have been made all year round the majority of productive sightings occurred between June and September.

RESULTS

The following list outlines the species that have thus far been recorded on the site:

INSECTA

Order Odonata: Dragonflies

Zygoptera

Banded Demoiselle *Calopteryx splendens*

Azure Damselfly *Coenagrion puella*

Blue-tailed Damselfly *Ischura elegans*

Anisoptera

Southern Hawker *Aeshna cyanea*

Brown Hawker *Aeshna grandis*



Figure 1 Southern Hawker *Aeshna cyanea*

Order Orthoptera: Grasshoppers and Crickets

Acrididae

Lesser Marsh Grasshopper *Chorthippus albomarginatus*

Tettigonidae

Long-winged Conehead *Conecephalus discolor*

Roesel's Bush-Cricket *Metrioptera roeselii*



Figure 2 Lesser Marsh Grasshopper *Chorthippus albomarginatus*

Order Hemiptera: Bugs

Homoptera

Common Froghopper *Philaenus spumarius*

Miridae

Grass Bug *Stenodema laevigatum*

Order Mecoptera: Scorpion Flies

Panorpidae

Scorpion Fly *Panorpa germanica*

Order Coleoptera: Beetles

Pyrochroidae

Cardinal Beetle *Pyrochroa serraticornis*

Coccinellidae

24-Spot Ladybird *Subcoccinella 24-punctata*

14-Spot Ladybird *Propylea 14-punctata*

7-Spot Ladybird *Coccinella 7-punctata*

2-Spot Ladybird *Adalia 2-punctata*

Chrysomelidae

Leaf Beetle *Gastrophysa viridula*

Oedmeridae

Thick-kneed Beetle *Odemera nobilis*



Figure 3 Thick-kneed Beetle *Odemera nobilis*

Order Lepidoptera: Butterflies and Moths

Hesperiidae

Large Skipper *Ochlodes venatus*

Small Skipper *Thymelicus sylvestris*

Essex Skipper *Thymelicus lineola* (confirmed)

Pieridae

Large White *Pieris brassicae*

Small White *Pieris rapae*

Green-veined White *Pieris napi*

Lycaenidae

Small Copper *Lycaena phleas*

Common Blue *Polyommatus icarus*

Nymphalidae

Red Admiral *Vanessa atalanta*

Painted Lady *Vanessa cardui*

Small Tortoiseshell *Aglais urtica*

Peacock *Inachis io*

Comma *Polyommatus c-album*

Satyridae

Speckled Wood *Pararge aegeria*

Meadow Brown *Maniola jurtina*

Gatekeeper *Pyronia tithonus*

Ringlet *Aphantopus hyperantus*



Figure 4 Common Blue *Polyommatus icarus*

Geometridae

Blood Vein *Timandra griseata*

Common Carpet *Epirrhoe alternata*

Silver Y *Autographa gamma*



Figure 5 Blood Vein *Timandra griseata*

Order Diptera: True Flies

Tipulidae

Crane fly *Tipula paludosa*

Syrphidae

Hover Fly *Helophilus pendulus*

Hover Fly *Episyrphus balteatus*
Hover Fly *Sphaerophoria scripta*
Hover Fly *Megasyrphus annulipes*
Hover Fly *Eupeodes nitens*

Tachinidae

Green Bottle *Lucilia caesar*
Flesh-fly *Sarcophaga carnaria*

Empididae

Dance Fly *Empis sp.*



Figure 6 Crane Fly *Tipula paludosa*

Order Hymenoptera: Bees, Wasps and Ants

Argidae

Sawfly *Arge ustulata*

Tenthredinidae

Figwort Sawfly *Tenthredo scrophulariae*

Ichneumonidae

Ichneumon Wasp *Amblyteles armatorius*

Vespidae

Common Wasp *Vespa vulgaris*

Apidae

Honey Bee *Apis mellifera*
Bumblebee *Bombus hortorum*
Carder Bee *Bombus pascuorum*
Red-tailed Bumblebee *Bombus lapidarius*



Figure 7 Red-tailed Bumblebee *Bombus lapidarius*

MOLLUSCA

Order Gastropoda: Snails and Slugs

Helicidae

White-Lipped Snail *Cepaea hortensis*

Succineinae

Amber Snail *Succinea putris*

Arionidae

Black Slug *Arion ater*

DISCUSSION

The list of currently identified species is by no means an exhaustive one. For a start no attempts have been made to survey and identify arachnids, ants or any aquatic invertebrates. Instead this document lists what is currently known about the site. Questions of abundance are likewise not answered although in time it is expected the easier to see and identify species such as those in the orders of Odonata and Lepidoptera will be quantified. Efforts have already begun to record numbers during weekly visits.

Other suitable recording would be a greater focus in late summer on the number and sex of Orthoptera species with a view to assessing the increasing movement of formerly southerly species into the area. It is also hoped to increase the awareness of moth species by including a number of night time visits.